

Eastbrook Crossland Slate Trays Cutting Guide

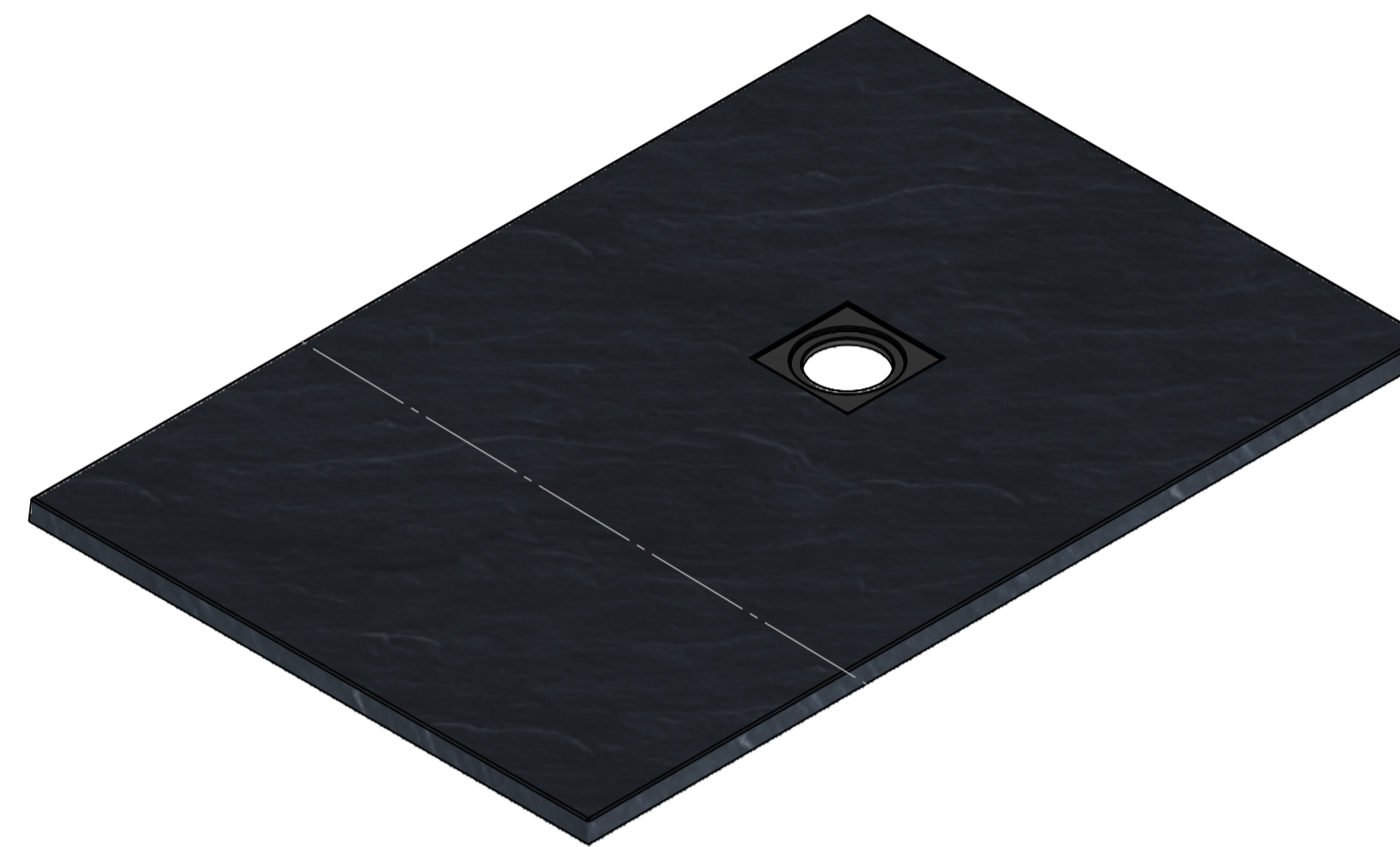
Read the instructions carefully prior to starting

- Do not cut more than stated dimensions
- Cutting the tray will marginally reduce center height
- Due to the gel coat finish only cut sides going against the wall(s)
- Use a circular saw and a diamond cutting blade to make any necessary cuts
- The guarantee of the Tray will be void if the tray is cut larger than the maximum shown on the table

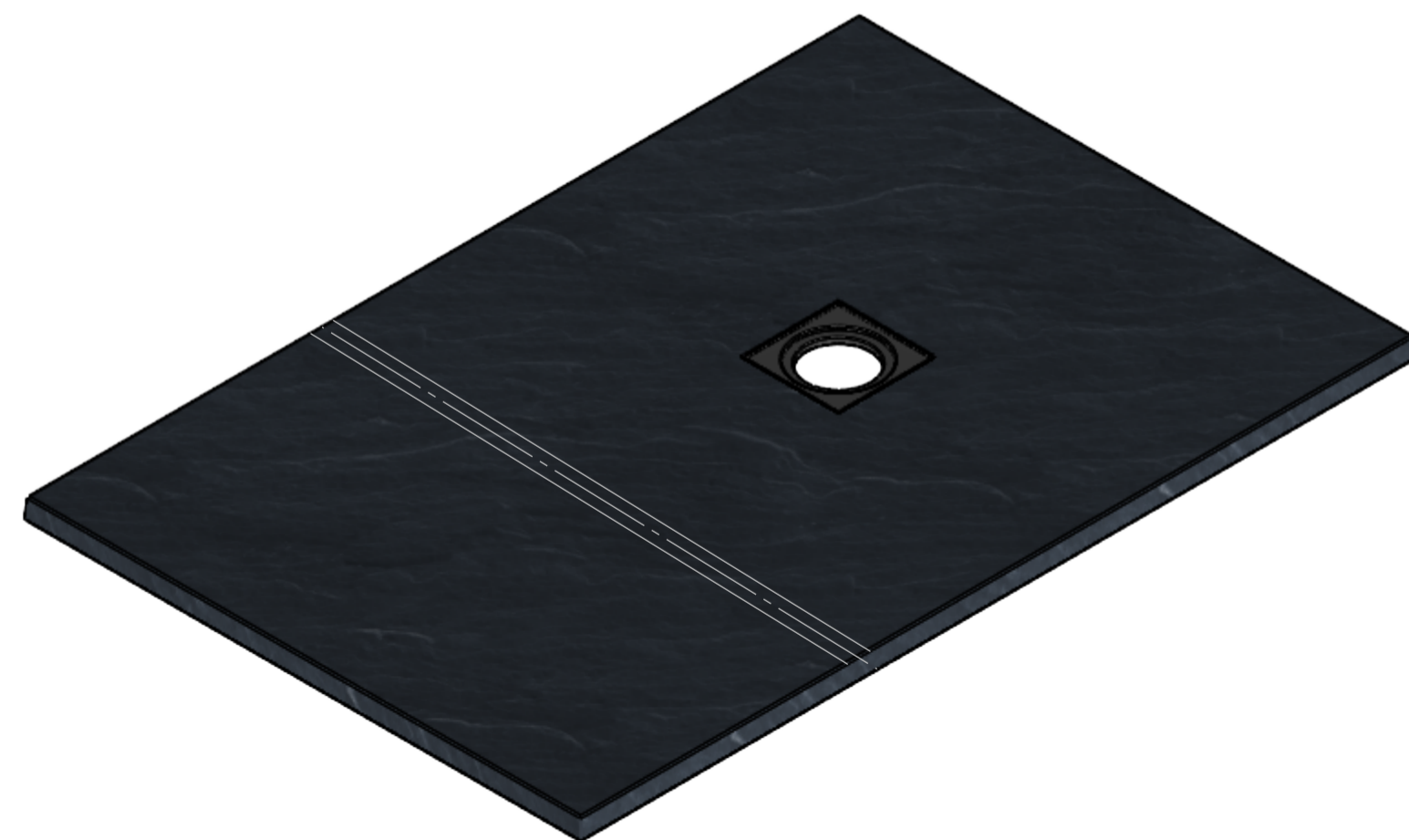
1) Measure the floor area to determine the required cuts. Using **Table A** on the right select the correct size of your tray and ensure that your required cuts do not go over the maximum dimensions stated.



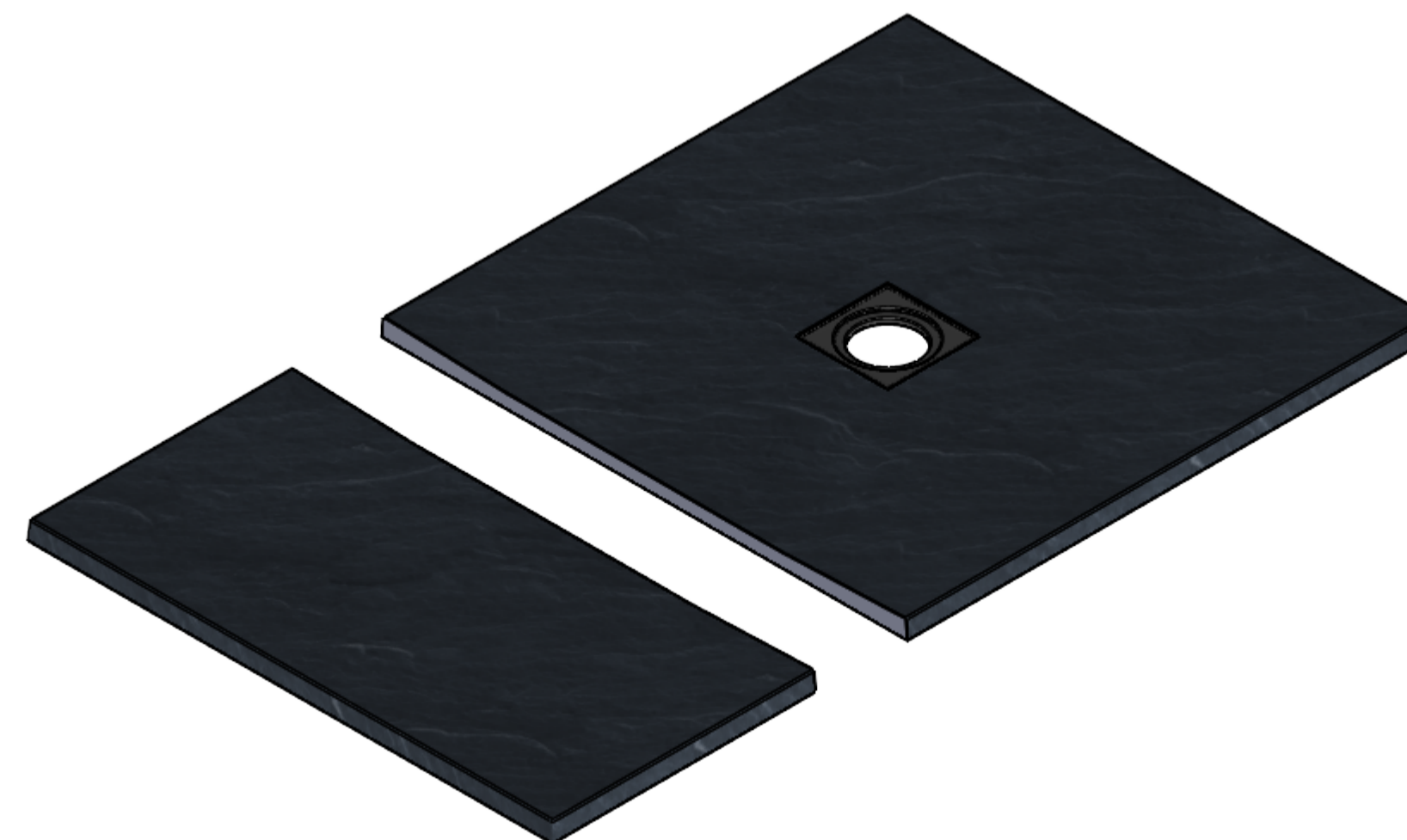
2) Carefully draw a light line on the Tray using a pencil where you wish to cut the Tray. Make sure you do not score the Tray surface.



3) Check that your markings are correct and then mask off the cut line to protect the tray surface.



4) Using a circular saw and a diamond cutting blade cut along the marks which were created in step 2.



- The cutting of the Tray is irreversible and therefore it is not manufacturers responsibility if the Tray is cut incorrectly. Do not cut until you are 100% satisfied that you have read and understand these instructions.

Table A

Tray Size	Maximum dimensions		
	a	b	c
800 Quad	100	-	-
800 Square	100	-	-
900 Quad	125	-	-
900 Square	125	-	-
1000 x 700	150	100	100
1000 x 800	150	150	100
1000 x 900	150	200	100
1100 x 700	200	100	100
1100 x 800	200	150	100
1100 x 900	200	200	100
1200 x 700	300	100	100
1200 x 800	300	150	100
1200 x 900	300	200	100
1200 x 800 Left Hand Quad	300	150	-
1200 x 800 Right Hand Quad	300	150	-
1200 x 900 Left Hand Quad	300	200	-
1200 x 900 Right Hand Quad	300	200	-
1400 x 700	500	100	100
1400 x 800	500	150	100
1400 x 900	500	200	100
1500 x 700	600	100	100
1500 x 800	600	150	100
1500 x 900	600	200	100
1600 x 700	700	100	100
1600 x 800	700	150	100
1600 x 900	700	200	100
1700 x 700	800	100	100
1700 x 800	800	150	100
1700 x 900	800	200	100

